

Diabetes Prevention Program Billing Webinar: Medicare

Brought to you by: Pennsylvania Pharmacists Association
Presenter: Ashley Keller, Partner Relationship Manager, OmniSYS

Objectives

- Understand the organizational steps needed in order to be enrolled as an MDPP provider
- Have an understanding of who can bill for the Diabetes Prevention Program
- Understand how to submit claims to Medicare
- Understand expected reimbursement models
- Learn about additional opportunities for payment

Congrats! You made it through Preliminary/Full Recognition of the CDC Diabetes Prevention Program

Now... Let's talk about how to get reimbursed for those services!



Why should I enroll with Medicare as a MDPP Supplier?

- Creating a new, sustainable revenue stream outside of prescriptions
- Expanding the clinical services provided within your pharmacy
- Helping to make healthy changes and produce outcomes with your patients

How to enroll as an MDPP Provider

- Type 1 National Provider Identifier (NPI) – All lifestyle coaches will need to have a Type 1 NPI
 - Anyone can get a Type 1 NPI, does not have to be a pharmacist
 - Type 1 is different than Type 2 NPI that your pharmacy organization has
 - Simple process- 10 minutes!
 - <https://npiregistry.cms.hhs.gov>

How to enroll as an MDPP Provider

I am enrolled with Medicare as a DME or Mass Immunizer- Can I use this enrollment for DPP billing?



No- MDPP requires a separate enrollment type to bill



How to enroll as an MDPP Provider

- Enroll online through PECOS as an MDPP Provider
 - Create an initial NEW application as an organization
 - Select "Medicare Diabetes Prevention Program Supplier" as enrollment type
- Key things to be prepared with:
 - Utilize the Medicare Prevention Program Enrollment Checklist
 - <https://innovation.cms.gov/files/vmdpp-enrollmentcl.pdf>
 - Organizational Code from CDC
 - Lifestyle Coach Type 1 NPI
 - Organizational NPI *Medicare encourages a separate NPI to ensure claims are not denied.
 - Tax ID number
 - Payment for new Pecos Application
 - * Due to COVID, Medicare is waiving enrollment fees. This is subject to change at any time

How to enroll as an MDPP Provider

Medicare Enrollment
Supplemental Enrollment

Welcome to the Medicare Provider Enrollment, Claims, and Ownership System (PECOS)

SYSTEM NOTIFICATIONS:

- **IMPORTANT:** DASHC (DASH) will hold a National Provider Enrollment Conference on September 2-3, 2020 at the Bureau Convention and Exhibition Center in Washington. Take advantage of this opportunity to interact directly with CMS and Medicare Administrative Contractor provider enrollment experts.
- **NOTICE:** DASH is using the temporary order number 1020 for the Social Security. All to access the application for the first time, please submit an application on or after March 1, 2020 to receive the Social Security. Please do not submit an application for your practice application. For more information on provider enrollment limitations, please see CMS. To access web on 2020, please visit.
- **NOTICE:** Due to the recent changes with COVID-19, Risk Factor Authentication (RFA) for PECOS has been suspended. A Risk Factor Authentication will be required to enter the new provider information when logging into PECOS until further notice. Providers will be notified prior to resuming RFA in the future.

USER LOGIN

Please use your CMS Identity & Access Management System (IAM) ID and password to log in:

* User ID:

* Password:

BECOME A REGISTERED USER

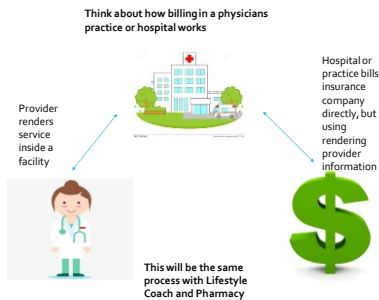
You may register for a new account or you may an Individual Provider, Authorized or Delegated Official for a Provider or a Provider Billing Agent, or an individual who wants to be added to a provider's account.

Register for a new account

Questions? Learn more about registering for an account

NEW: From now on, Hospital Provider or Supplier you must register for an NPI ID before enrolling with Medicare.

Who will bill for MDPP services?



How to submit claims to Medicare

- Medicare Diabetes Prevention Program is billed on the medical benefit of the patient
 - Benefit: No DIR fees, no PBMS
 - Things to consider: Need to check eligibility, patient responsibility, deductibles
- Will need a technology or system in place to submit medical claims
 - X-12 claims
 - Submit HCPCS "G" codes

MDPP reimbursement models

How much will I get reimbursed for DPP Services?

- Reimbursement for DPP is a value based payment model
 - Reimbursement is tied to two things
 - Patient participation in classes
 - Patient weight loss
- Reimbursement ranges from \$170-\$689 over a 2 year period



MDPP Reimbursement Models

CORE SESSIONS	CORE MAINTENANCE SESSIONS	ONGOING MAINTENANCE SESSIONS
<ul style="list-style-type: none"> • Beneficiaries must attend one core session to initiate MDPP services • A supplier can be paid based on the beneficiary's attendance, regardless of the beneficiary's weight loss 	<ul style="list-style-type: none"> • Payments are made in two 3-month intervals • A supplier is paid if a beneficiary meets attendance goals • A supplier is paid more if the beneficiary also meets the 5% weight loss goal during the interval 	<ul style="list-style-type: none"> • Payments are made in four 3-month intervals • A supplier is only paid if the beneficiary attends two ongoing maintenance sessions and meets the 5% weight loss goal during the interval

1



MDPP Reimbursement Models

Maximum possible payments per eligible beneficiary: none

	CORE SESSIONS (16 sessions)	CORE MAINTENANCE SESSIONS				ONGOING MAINTENANCE SESSIONS			
	Months 0-6	INTERVAL 1 (4 sessions)	INTERVAL 2 (4 sessions)	INTERVAL 3 (4 sessions)	INTERVAL 4 (4 sessions)	INTERVAL 1 (4 sessions)	INTERVAL 2 (4 sessions)	INTERVAL 3 (4 sessions)	INTERVAL 4 (4 sessions)
Attendance only	Attend 1 session total: \$30 (\$9878) Attend 4 sessions total: \$51 (\$9874) Attend 9 sessions total: \$91 (\$9873)	Attend 2 sessions (with at least 5% WL): \$15 (\$9876)	Attend 2 sessions (with at least 5% WL): \$15 (\$9877)	5% WL and attendance must be achieved to receive payment during ongoing maintenance sessions					
Attendance and Weight Loss (WL)	5% WL is not required to receive payment	Attend 2 sessions (with at least 5% WL): \$42 (\$9876)	Attend 2 sessions (with at least 5% WL): \$42 (\$9877)	Attend 2 sessions (with at least 5% WL): \$51 (\$9882)	Attend 2 sessions (with at least 5% WL): \$51 (\$9883)	Attend 2 sessions (with at least 5% WL): \$51 (\$9884)	Attend 2 sessions (with at least 5% WL): \$51 (\$9885)	Attend 2 sessions (with at least 5% WL): \$51 (\$9886)	Attend 2 sessions (with at least 5% WL): \$51 (\$9887)
Additional Codes	5% WL achieved: \$345 (\$9888)	5% WL achieved: \$26 (\$9889)				Bridge payment: \$26 (\$9890)			

Recent attendance at sessions that are not associated with a performance goal. Non-possible codes should be listed on the

Other Payment Models

- Medicare MCO's have this as a benefit for members
 - Some MCOs, UnitedHealthcare for example will reach out to providers once they are enrolled as a MDPP provider to ask them to join the network
- Self-insured employers
 - HUGE opportunity here! A great way to help them keep employees healthy, reduce health care spend and receive cash payment
 - Keep in mind you can not charge less than what you charge Medicare if you are billing Medicare
- State employee benefit for Pennsylvania as of January 2020
- Contracting/credentialing will be required in order to bill Medicaid/Commercial payers

Other Payment Models

- Contracting/Credentialing
 - Billing to a medical payer will require you to go through credentialing and receive medical contract
 - This is the same process any other medical provider goes through
- What do I need to do in order to contract/credential
 - Determine what payers you want to get into network with
 - Have a Type 1 NPI
 - Complete CAQH
 - <https://www.caqh.org>
 - Database with all your credentials
- Why should I contract/credential?
 - This is the future of pharmacy!
 - This is how clinical services will be reimbursed
 - Allows you to be prepared as additional services are able to be provided by pharmacists

STRAND-Rx
Users

- Strand users have access to the Contracting and Credentialing Training Center that provides step by step instructions on how to enroll with Medicare and other payers



Appendix

- Medicare Diabetes Prevention Program: Quick Reference Guide to Payment and Billing. Retrieved from- <https://innovation.cms.gov/files/x/mdpp-billingpayment-refguide.pdf>
